

The Drovers Solar Farm

Consultation Report Appendix A – Non-statutory Engagement Supporting Material – Part 1

Prepared by: Copper Consultancy

Date: November 2025

PINS reference: EN0110013

Document reference: APP/5.2 (Original)

APFP Regulation Reg 5(2)(q)

Planning Act 2008

Infrastructure Planning (Applications: Prescribed Forms and Procedure) Regulations 2009





Contents

1	List of stakeholders contacted as part of the Applicant's early engagement.....	1
2	Letter issued to 'near neighbours'	4
3	Invite issued to early-engagement workshops.....	7
4	Early-engagement workshop materials (maps and plans).....	11
5	Early-engagement workshop presentation.....	27
6	Initial public newsletter.....	52
7	Workshop Summary Report.....	57

1 List of stakeholders contacted as part of the Applicant's early engagement

Technical stakeholders

Breckland District Council Officers
English Heritage
Historic England
King's Lynn & West Norfolk Borough
Council Officers
Logistics UK
Natural England
Norfolk Biodiversity Partnership
Norfolk County Council Officers
Norfolk Farming & Wildlife Advisory Group
Norfolk Rivers Trust
Norfolk Wildlife Trust

Breckland District Council (Ward Members)

Nar Valley Ward
Swaffham Ward
Ashill Ward
Launditch Ward
Bedingfeld Ward
Necton Ward

King's Lynn and West Norfolk Borough Council (Ward Members)

Airfield Ward
Gayton and Grimston Ward
Massingham with Castle Acre Ward
Wissey Ward

Parish Councils

Narford Parish Meeting
Sporle with Palgrave Parish Council
Southacre Parish Meeting
Swaffham Town Council
Newton by Castle Acre Parish Meeting
Little Dunham Parish Council
Necton Parish Council
Holme Hale Parish Council
North Pickenham Parish Council
Narborough Parish Council
West Acre Parish Council
Castle Acre Parish Council
Pentney Parish Council

East Walton Parish Meeting
Little Dunham Parish
Holme Hale Parish

Breckland District Council

Deputy Leader; Executive Member for Housing & Planning
Executive Director of Breckland Council
Executive Member for Waste, Environmental Health, Licensing & Sustainability
Leader of the Council

Members of Parliament (MP)

MP for Bury St. Edmunds and Stowmarket
MP for Ely and East Cambridgeshire
MP for Mid Norfolk
MP for North East Cambridgeshire
MP for North West Norfolk
MP for South West Norfolk
MP for Waveney Valley
MP for West Suffolk

Community Interest Groups

Sports & Leisure
Active Norfolk
Breckland Walkers Group
British Horse Society - East of England
Castle Acre Coronation Bowls Club
Castle Acre Cricket Club
Castle Acre Playing Field Association
Castle Acre Swifts Football Club
Community Action Norfolk
Cycling Club Breckland
Dereham Round Table
Dereham Runners Athletic Club
Dereham Town Football Club
Dereham Trefoil Guild
Dereham Walkers are Welcome
King's Lynn Cycling Club
Mid Norfolk Singers
Nar Valley Long Distance Walkers Association
Nar Valley Ornithological Society
Norfolk Hang Gliding and Paragliding Club
Swaffham Bell Ringers

Swaffham Cricket Club
Swaffham Golf Club
Swaffham RUFC
Swaffham Town Bowls Club
West Norfolk Artists Association
West Norfolk Walking for Health
Women's Institute Norfolk Federation

History & Civic

Breckland Christian Fellowship
Fountain of Life Ashill
King's Lynn Civic Society
Nar Valley Group
Our Lady of Pity RC
St Nicholas Ashill
St Peter & St Paul Church
St. Mary's Church
Swaffham Baptist Church
Swaffham Heritage
Swaffham Methodist Church
The Breckland Society
West Norfolk & King's Lynn
Archaeological Society

Disability Groups

ASD Helping Hands
Caring Friends for Cancer
Dereham Deaf Social Club
Disability Network Norfolk Group
Hear for Norfolk
Vision Norfolk
West Norfolk Autism Group
West Norfolk Deaf Association
West Norfolk Disability Information Service

Faith/Religious Groups

West Norfolk Islamic Centre

Vulnerable Groups

1st Swaffham Scouts
Age Concern Swaffham & District
Age UK Norfolk
Brownies and Rainbows Norfolk Girlguiding
Creative Arts East
Dereham Food Cabin
Friends, Families and Travellers
Girl Guides South West Norfolk Division
King's Lynn Youth Club
LGBTQ+
Matthew Project
MensCraft
Mind Norfolk and Waveney
Norfolk Federation of Young Farmers' Club
Norfolk Good Neighbours
Norfolk LGBTQ+ Project
Norfolk Strategic Housing Partnership
Nourishing Norfolk Network
Scotty's Little Soldiers
Swaffham and District Young Farmers' Club
Time Norfolk
Travellers

Environmental Groups

Breckland Flora Group
Breckland Local Group
Climate Norfolk
CPRE Norfolk
Extinction Rebellion King's Lynn & West Norfolk
Gaywood Valley Conservation Group
Get Norfolk Greener
King's Lynn Climate Concern
National Farmers Union
Norfolk and Norwich Bat Group
Norfolk Birding
Norwich Friends of the Earth
The Breckland Farmers Wildlife Network
West Norfolk Conservation Volunteers
Young Activist Network

Near neighbours

Rectory Farm, NN6 9PS
Gibb Wood, NN6 9PU

2 Near neighbour letter



Island Green Power – The Drovers Solar Farm - Invitation to briefing

12 August 2024

Dear Consultee,

I am writing on behalf of Island Green Power (IGP), a leading developer of renewable energy projects exploring the potential for a solar farm with battery energy storage on the land located between Swaffham, Narford and South Acre. We are writing to you because you are a local business or resident who will be in close proximity to the proposed solar farm.

Introduction to The Drovers Solar Farm

The way we generate and consume energy is changing. The transition towards renewable energy and away from fossil fuels is both an environmental and economic necessity. It is critical to the UK's energy security, combatting climate change and to keeping domestic bills low by reducing reliance on energy imports.

Our project 'The Drovers Solar Farm' has the potential to deliver a maximum power output of 500 megawatts (MW) - enough to power 115,000 households annually - and become a substantial source of electricity for the country. The energy storage element of the scheme will help store surplus renewable generation and then deploy it to the national grid when it is needed.

The applicant for The Drovers Solar Farm will be The Drovers Solar Farm Limited, a subsidiary of IGP. IGP is a leading developer of renewable energy projects, with a focus on utility-scale solar farms and battery energy storage. Our mission is to help the UK increase our solar energy usage, making more renewable energy possible whilst drastically reducing our carbon emissions.

Application for Development Consent Order (DCO)

Due to the size of the potential energy capacity proposed for the Drovers Solar Farm, the project is classified as a Nationally Significant Infrastructure Project (NSIP). The planning permission to build and operate the project requires Island Green to submit a Development Consent Order (DCO) application.

Once submitted, the Drovers Solar Farm DCO application would be examined by the Planning Inspectorate, the independent body responsible for examining NSIPs. They in turn would make a recommendation on the project application to the Secretary of State for the Department of Energy Security and Net Zero (DESNZ). The Secretary of State will then make the final decision on the DCO application.

Find out more

A key part of this process will be a public consultation where we will ask those potentially affected by the project to share their views and feedback online and in-person events.

If you would like to speak with our project team about the proposals, please contact us via email at info@drovessolarfarm.co.uk or call our community relations freephone at 08000129154. We would be happy to discuss the project in more detail or arrange a time to meet with you.

Kind regards,

Harman Sond
Project Development Manager – Island Green Power

3 Invite issued to early-engagement workshops



Island Green Power – The Drovers Solar Farm – Invitation to Co:design workshop

17 September 2024

Dear Sir/Madam,

I am writing on the behalf of Island Green Power (IGP), a leading developer of renewable energy projects, exploring the potential for a solar farm with battery energy storage located on land north of Swaffham and south of Castle Acre, West Norfolk.

Our plans are still at an early stage. We have carried out initial studies and assessments to identify areas of land that would potentially be suitable for a proposed solar farm with energy storage.

We are writing to you as a member of Swaffham Town Council who may have an interest in our proposals. **As part of our non-statutory consultation process, we have scheduled another 'Co:design' workshop and we would like to invite you to participate in the early design process and share insights on our proposals.**

The feedback we receive will inform more detailed proposals, which members of the public will have the opportunity to comment on during our public ('statutory') consultation, expected to be held in spring 2025.

About the workshop

We are holding a series of 'Co:design' workshops in September and October 2024, which form an important part of the non-statutory consultation process. As opposed to a traditional 'public exhibition', the workshops are open to key individuals, representatives and groups who have been invited to attend.

The workshop will last for approximately three hours and will require attendees to arrive promptly for the start of the workshop and stay for the duration, providing the best opportunity to engage with us at this stage.

The workshop will begin with a short presentation by project team members and will be followed by an interactive question-and-answer session and discussion of the proposed site. This session will provide the opportunity for us to present, and listen to your views on all aspects of the project, which include (and are not limited to) the following areas:

- The project, the site selection process to date, initial identification of local constraints and other local factors to consider;
- Environmental considerations, such as ecology and biodiversity;
- Potential environmental enhancement and mitigation measures;
- Community benefits; and
- Future consultation and engagement planned for the project.

Your attendance at and feedback during this workshop will be play and important role in helping us refine our proposals ahead of our statutory consultation.

More about The Drokes Solar Farm

The way we generate and consume energy is changing. The transition towards renewable energy and away from fossil fuels is both an environmental and economic necessity. It is critical to the UK's energy security, combatting climate change and to keeping domestic bills low by reducing reliance on energy imports.

Our project, 'The Drokes Solar Farm', has the potential to generate electricity of up to 500 megawatts (MW) - enough to power approximately 115,000 households annually - and become a substantial source of electricity for the country. The energy storage element of the scheme will help store surplus renewable generation and then deploy it to the national grid when it is needed.

The applicant for The Drokes Solar Farm will be The Drokes Solar Farm Limited, a subsidiary of IGP. IGP is a leading developer of renewable energy projects, with a focus on utility-scale solar farms and battery energy storage. Our mission is to help the UK increase our solar energy usage, making more renewable energy possible whilst drastically reducing our carbon emissions.

Application for a Development Consent Order (DCO)

Due to the size of the potential energy capacity proposed for the Drokes Solar Farm, the project is classified as a Nationally Significant Infrastructure Project (NSIP). The planning permission to build and operate the project requires Island Green to submit a Development Consent Order (DCO) application.

Next Steps

As a key representative / organisation who may have an interest in our proposals, we would like to invite you, if you have not done so already, to attend a workshop on the following date:

Date: Tuesday 1st October 2024

Time: 17:00 – 20:00

Location: Best Western George Hotel, Station Street, Swaffham, Norfolk, PE37 7LJ

To register your attendance, please respond to this email by 26th September. We kindly ask that one representative from your organisation register to attend, in order to manage numbers on the day.

Light refreshments be provided, so please also let us know if you have any dietary requirements.

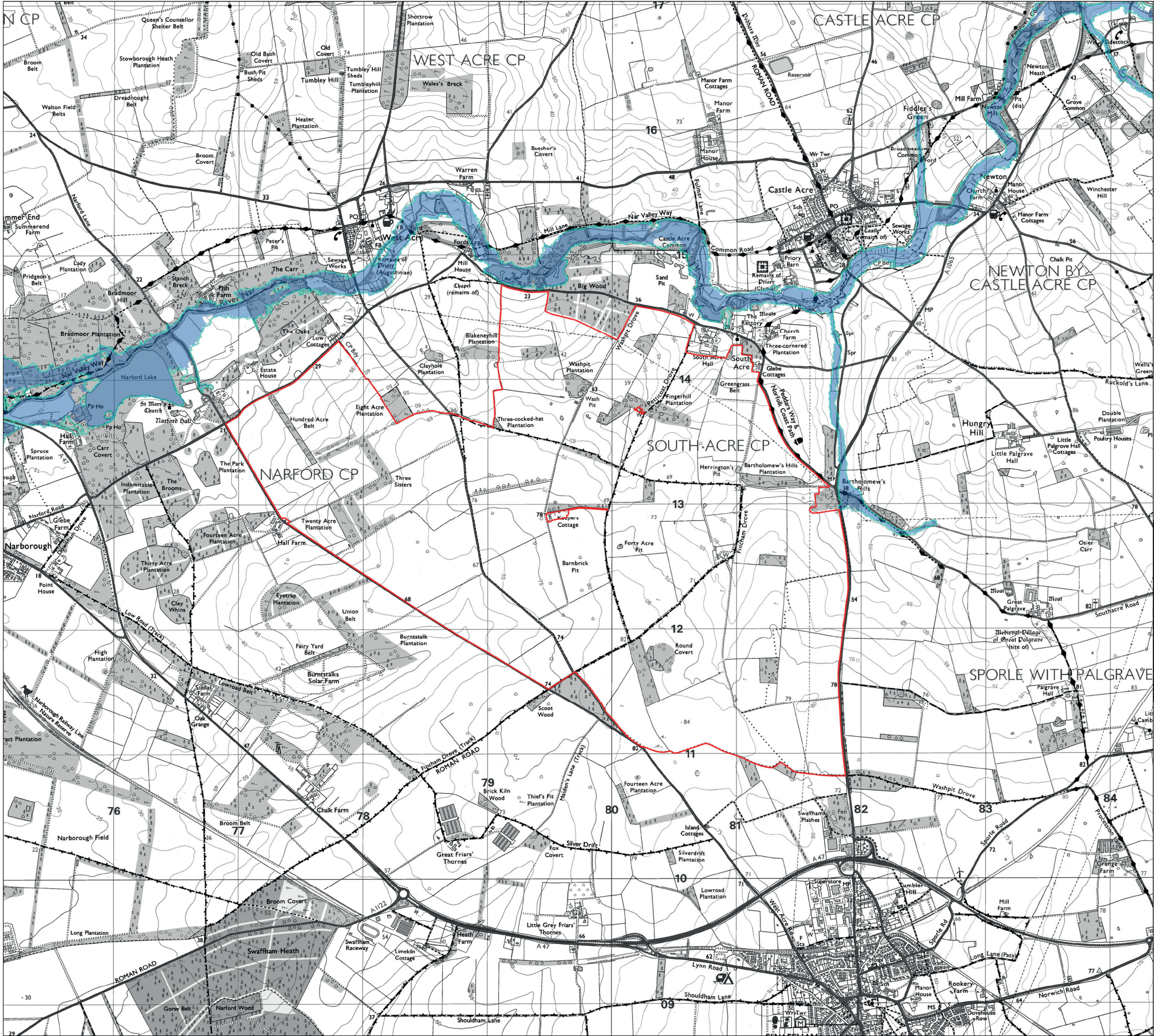
Full details of the workshop will be sent to confirmed attendees before the event. In the meantime, if you have any questions, please email us at info@drovessolarfarm.co.uk or call our community relations freephone at 0800 0129 154.

I look forward to welcoming you.

Yours sincerely,

Harman Sond
Project Development Manager – Island Green

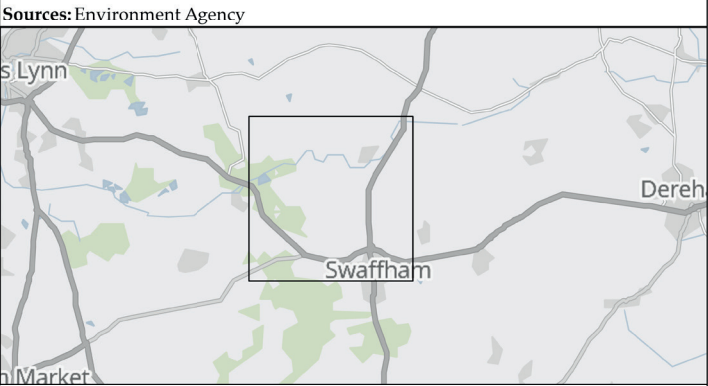
4 Early-engagement workshop materials (maps and plans)



DRAWING TITLE:
Flood Zones

DOCUMENT:
Co-Design Workshop

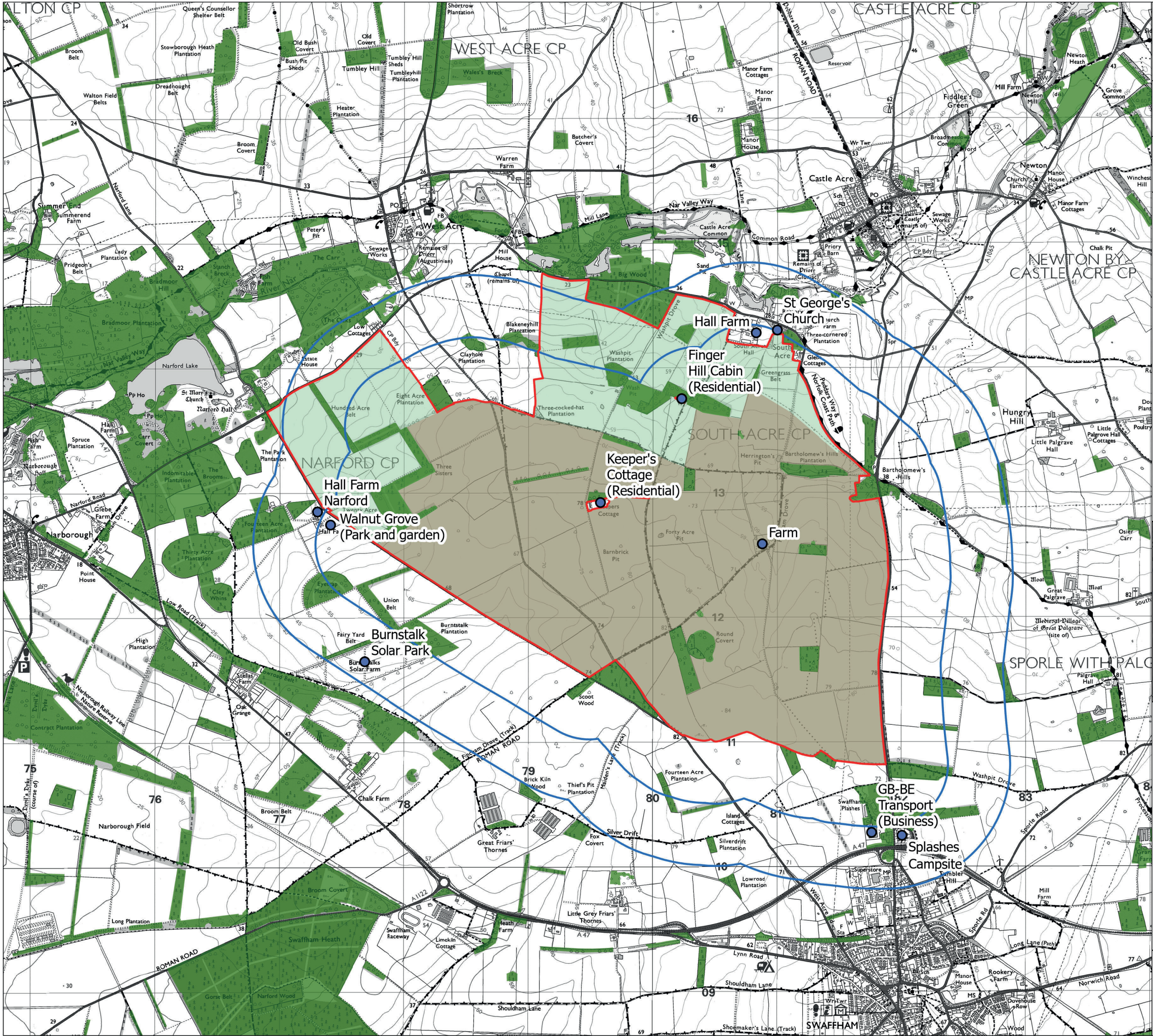
- LEGEND:
- Site Boundary
 - Flood Zone 2
 - Flood Zone 3



DWG. NO. WE001

DATE	Sept 2024	DRAWN	LN
SCALE @A3	1:30,000	CHECKED	EC
STATUS	Final	APPROVED	PD



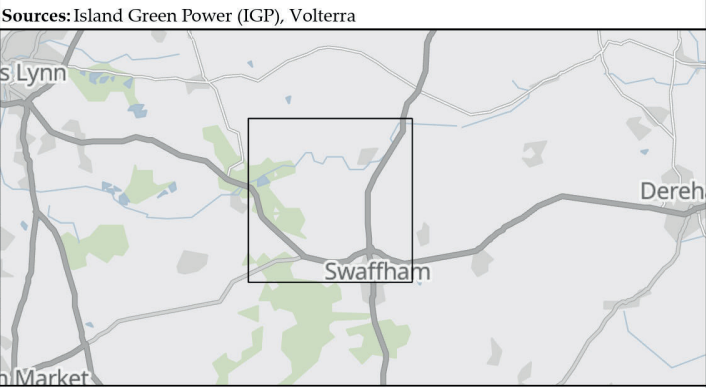


DRAWING TITLE:
Socio-economics Plan

DOCUMENT:
Co-Design Workshop

LEGEND:

- Site Boundary
- Potential area for solar and associated development
- Potential area for mitigation and enhancement
- 500m and 1km from potential area for solar and associated development
- Facilities
- Woodland



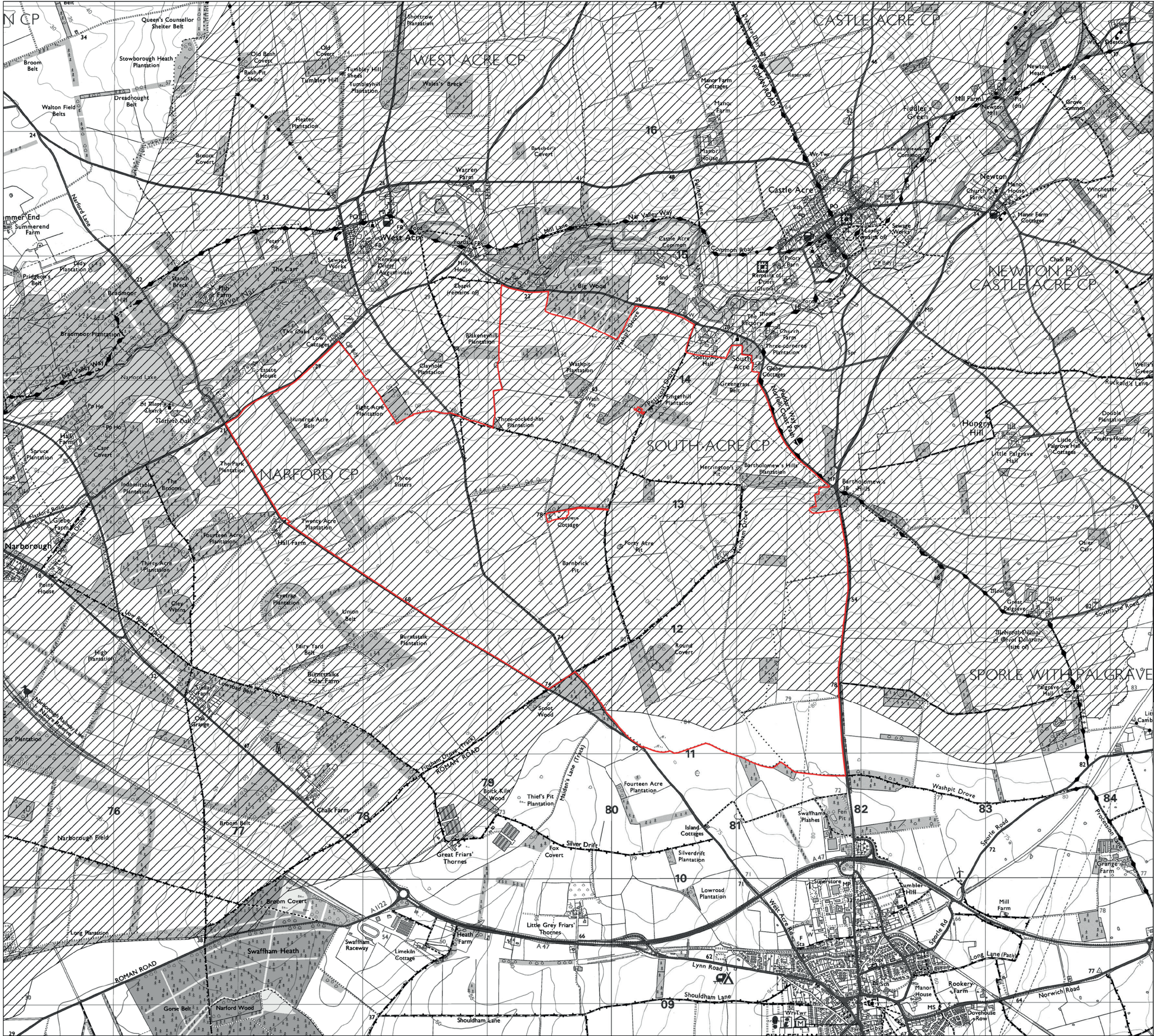
DWG. NO. 9485_0218

DATE	Aug 2024	DRAWN	ECa
SCALE @A3	1:30,000	CHECKED	RPi
STATUS	Final	APPROVED	RPI

No dimensions are to be scaled from this drawing.
All dimensions are to be checked on site.
Area measurements for indicative purposes only.
THIS DRAWING IS THE PROPERTY ISLAND GREEN POWER AND NO REPRODUCTION MAY BE MADE IN WHOLE OR IN PART WITHOUT PERMISSION

0 2 Km

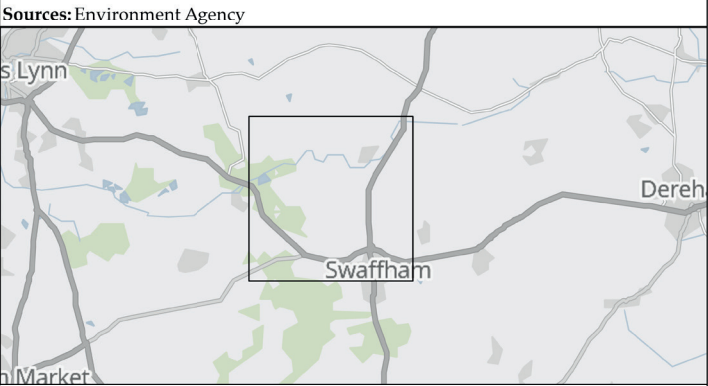




DRAWING TITLE:
Drinking Water Protected Area

DOCUMENT:
Co-Design Workshop

LEGEND:
 Drinking Water Protected Area



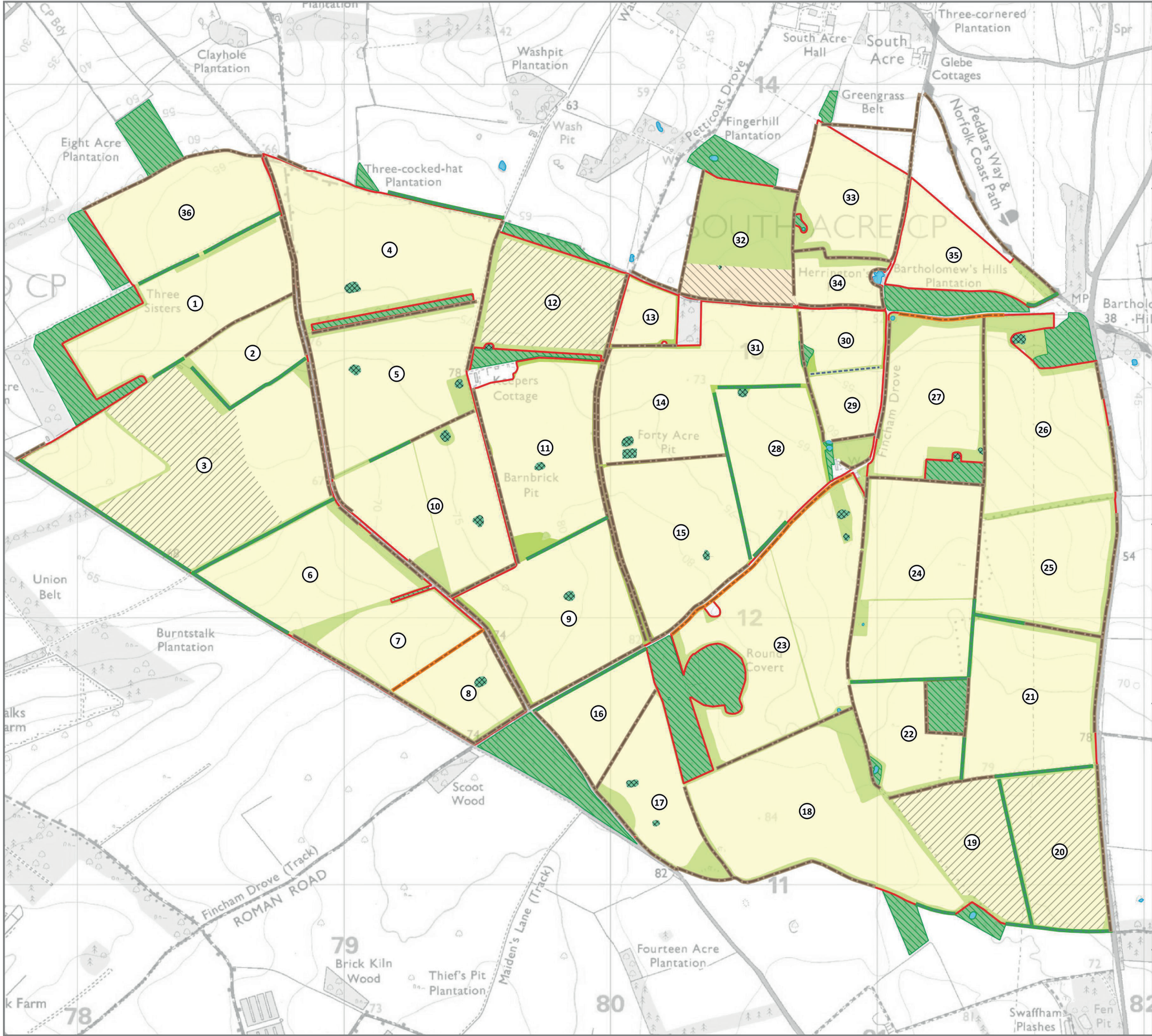
Sources: Environment Agency

DWG. NO. WE001

DATE	Sept 2024	DRAWN	LN
SCALE @A3	1:30,000	CHECKED	EC
STATUS	Final	APPROVED	PD

No dimensions are to be scaled from this drawing.
All dimensions are to be checked on site.
Area measurements for indicative purposes only.
THIS DRAWING IS THE PROPERTY ISLAND GREEN POWER AND NO
REPRODUCTION MAY BE MADE IN WHOLE OR IN PART WITHOUT PERMISSION

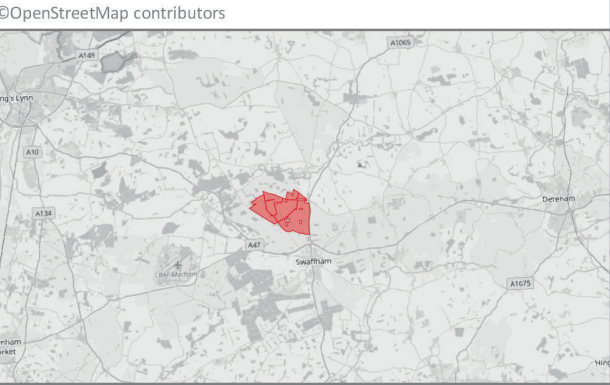




DRAWING TITLE:
Habitats and Ecological Features

DOCUMENT:
C0-Design Workshop

- LEGEND:
- | | | | |
|--|------------------|--|---------------------|
| | Survey Boundary | | Line of Trees |
| | Arable | | Hedgerow with Trees |
| | Pig grazed | | Hedgerow |
| | Poultry units | | Dry Ditch |
| | Grassland Margin | | |
| | Pond | | |
| | Dense Scrub | | |
| | Woodland | | |



DWG. NO. 6806/ECO3

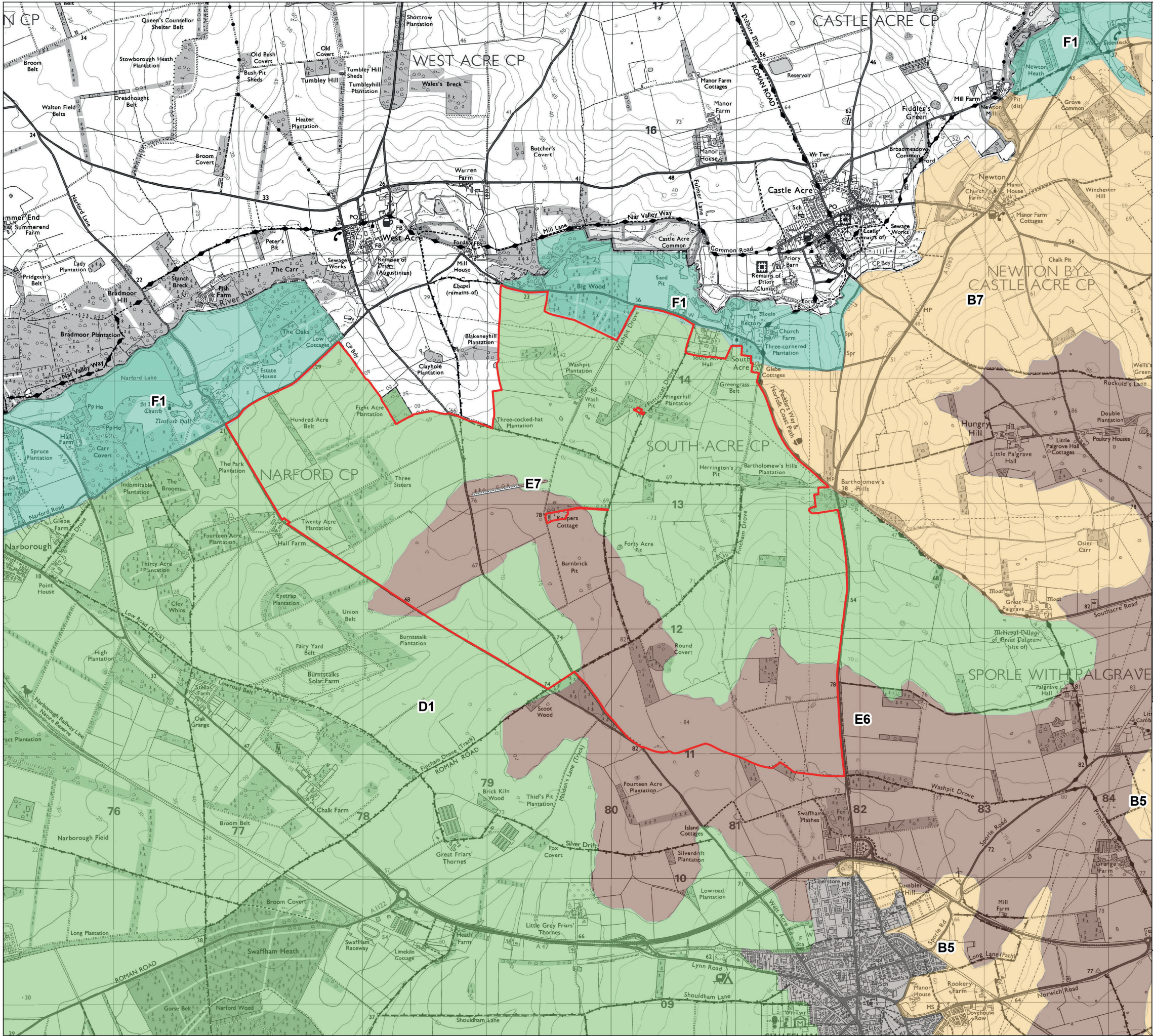
DATE	Sep 2024	DRAWN	JP
SCALE @3	1:14,000	CHECKED	ES
STATUS	Rev E	APPROVED	ES

No dimensions are to be scaled from this drawing.
All dimensions are to be checked on site.
Area measurements for indicative purposes only.

THIS DRAWING IS THE PROPERTY OF ISLAND GREEN POWER AND NO REPRODUCTION MAY BE MADE IN WHOLE OR IN PART WITHOUT PERMISSION

0 200 400 600 800 m





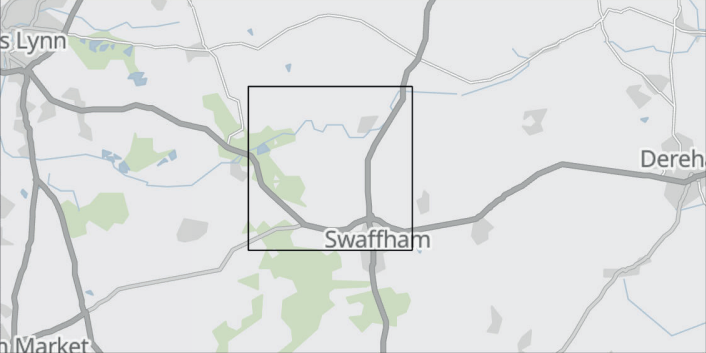
DRAWING TITLE:
Landscape Character

DOCUMENT:
Co-Design Workshop

LEGEND:
 Site Boundary

- Breckland Landscape Character Assessment
- B5: River Wissey Tributary Farmland
 - B7: River Nar Tributary Farmland
 - D1: Swaffham Heath
 - E6: North Pickenham Plateau
 - E7: Beeston Plateau
 - F1: River Nar Valley
 - Urban

Infrastructure Planning (Applications: Prescribed Forms and Procedure) Regulations 2009 - Reg 5 (2)
PINS REFERENCE NUMBER:
Sources: Island Green Power (IGP), INSERT SOURCES



DWG. NO. 9485_0231			
A	XXXXXXXXXX XXXXXXXXXXXX XXXXXXXXXXXX XXX	XX	dd/mm/yy
REV.	DESCRIPTION	APP.	DATE
DATE	Sep 2024	DRAWN	VW
SCALE @A3	1:30,000	CHECKED	RK
STATUS	Final	APPROVED	RK

No dimensions are to be scaled from this drawing.
All dimensions are to be checked on site.
Area measurements for indicative purposes only.
THIS DRAWING IS THE PROPERTY ISLAND GREEN POWER AND NO REPRODUCTION MAY BE MADE IN WHOLE OR IN PART WITHOUT PERMISSION

